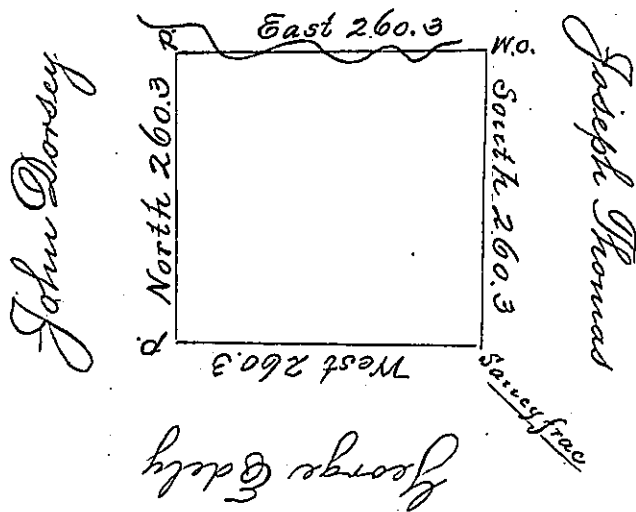


38

Donation Lands



The above is the draught of a Survey made May 14th 1794 in pursuance of a Warrant granted William W. Wells on the 25th day of April 1793 Situate Northwest of the Ohio river on the waters of Big Beaver Creek adjoining land granted to Joseph Thomas called Phillipville containing 400 acres with the usual allowance of 6 pcent &c

Daniel Brodhead Esq. Sg.

Jno Woge Sg.

IN TESTIMONY that the above is a copy of the original remaining on file in the Department of Internal Affairs of Pennsylvania, made conformably to an Act of Assembly approved the 16th day of February, 1833, I have hereunto set my Hand and caused the Seal of said Department to be affixed at Harrisburg, this third day of December 1901.

James W. Fitter
Secretary of Internal Affairs.